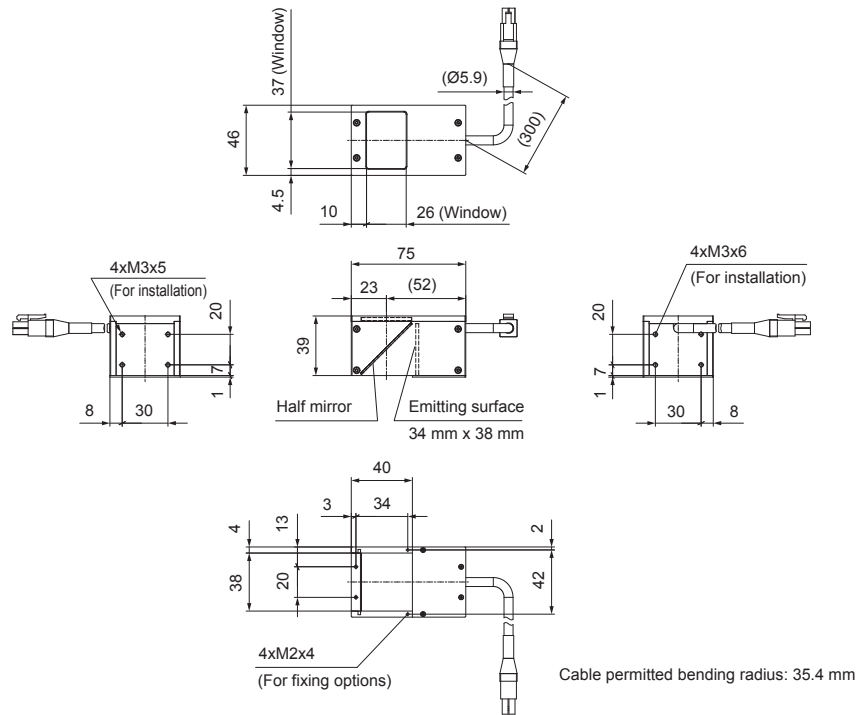
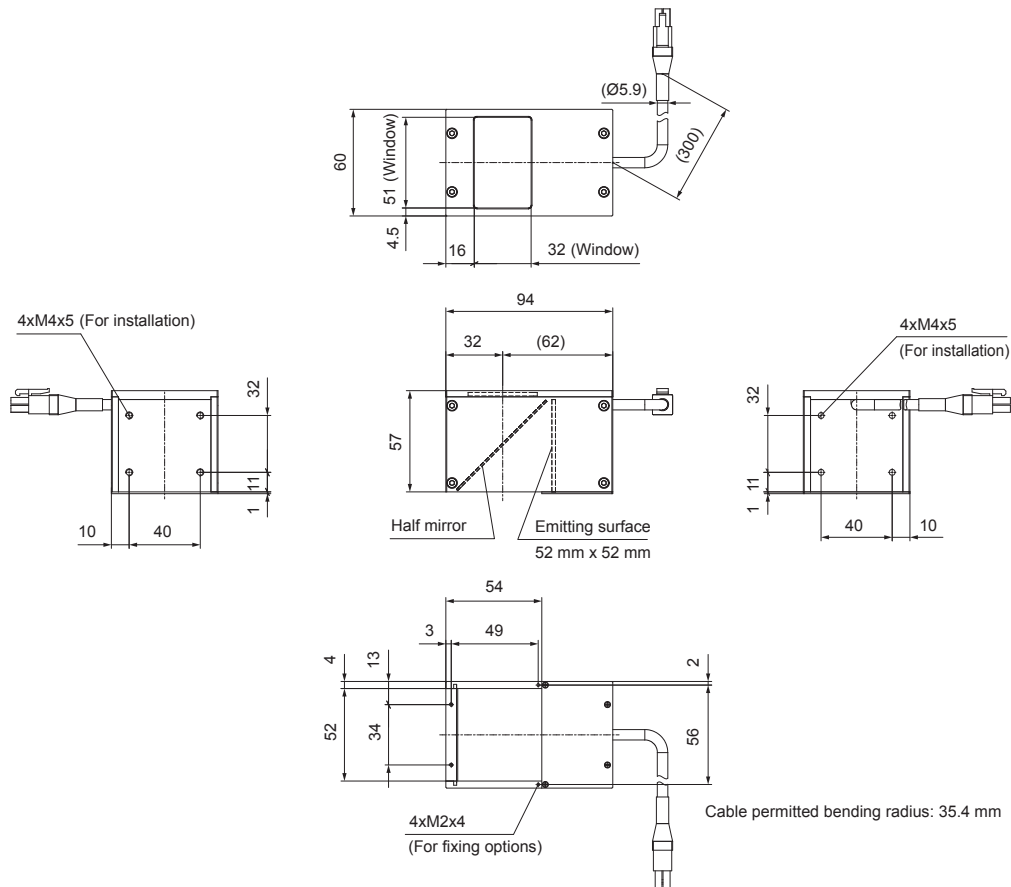


➤ Dimensions (mm)

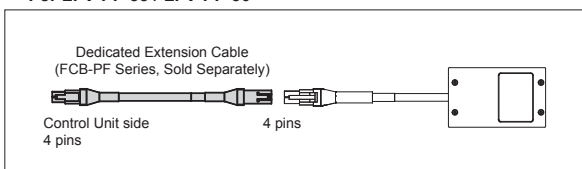
LFV-PF-35RD/SW



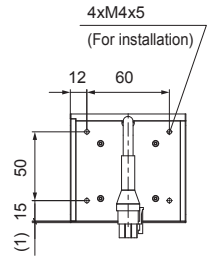
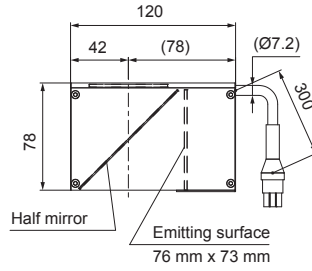
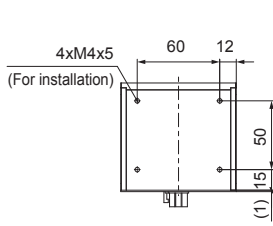
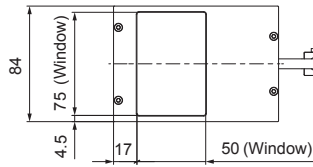
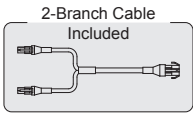
LFV-PF-50RD/SW



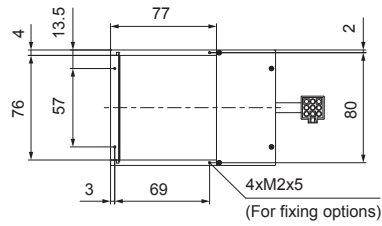
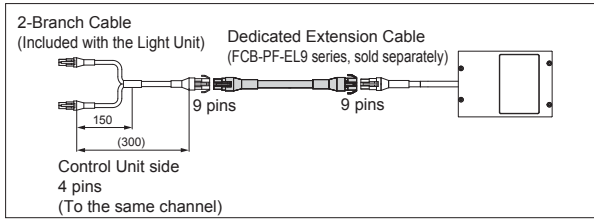
■ How to Connect the Extension Cables: For LFV-PF-35 / LFV-PF-50



LFV-PF-70RD/SW

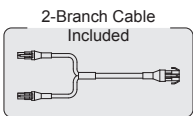


How to Connect the Extension Cables:
For LFV-PF-70

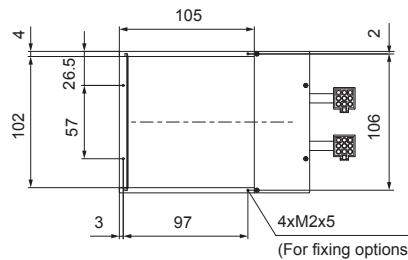
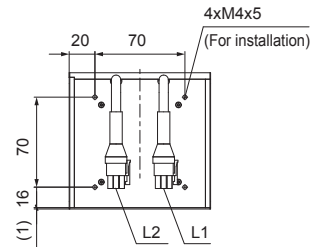
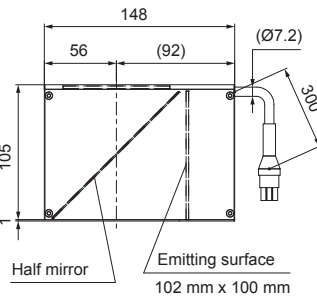
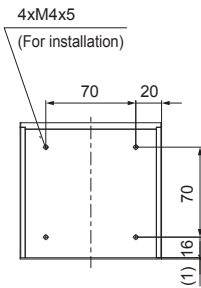
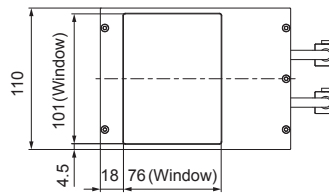


Cable permitted bending radius: 43.2 mm

LFV-PF-100RD/SW



X 2 pieces



Cable permitted bending radius: 43.2 mm

How to Connect the Extension Cables:
For LFV-PF-100

